



www.gnithyd.ac.in

# GURU NANAK INSTITUTE OF TECHNOLOGY

**City Office:** B2, 2<sup>nd</sup> Flr, Above Bata, Vikrampuri Colony, Karkhana Road, Secunderabad-50009, Telangana, India.  
Ph: +91-40-6632 3294, 6517 6117, Fax: +91-40-2789 2633

**Campus:** Ibrahimpatnam, R.R. District, Hyderabad-501506, Telangana, India. Ph: (0/95) 8414-20 21 20/21

Date: 27.08.2018

## CIRCULAR

Technical Training for IV B. Tech students are starting from 10<sup>th</sup> Sept, 2018 onwards. All HODs and Placements coordinators have to manage the trainings and ensure 95% attendance all through the sessions.

All Mentors need to send the compiled feedback report to Dr.B.Vijaya Kumar, HOD at [hodme.gnit@gniindia.org](mailto:hodme.gnit@gniindia.org) daily. Mentors are advised to take care of PNR (Students not participating in training).

### Agenda:

Introduction to solid works.

  
HOD-ME

**GURU NANAK INSTITUTIONS**  
www.gurunanakinstitutions.org

• Engineering • Dental • MBA • MCA • Pharmacy • PGDM

Guru Nanak Engineering College (NBA Accredited)  
Guru Nanak Institute of Technology  
Guru Nanak Institute of Pharmacy  
Guru Nanak Institute of PG Studies (MBA & MCA)  
Panineeya Hospital, Institute of Dental Sciences & Research Centre

**GBS** Guru Nanak Business School  
Guru Nanak Institute of Engineering & Management (Nagpur)  
Guru Nanak Institute of Engineering & Technology (Nagpur)  
Hermes College of Engineering & Management (Roorkee)  
The Edify School, DRS Education (Nagpur)



Accredited by  
National Board of Accreditation  
(CSE, ECE, ME)



Approved by  
AICTE - New Delhi



Affiliated to  
JNTU - Hyderabad

Hyderabad's First  
campus to become  
  
GOLD PARTNER



www.gnithyd.ac.in

# GURU NANAK INSTITUTE OF TECHNOLOGY

**City Office:** B2, 2<sup>nd</sup> Flr, Above Bata, Vikrampuri Colony, Karkhana Road, Secunderabad-50009, Telangana, India.  
Ph: +91-40-6632 3294, 6517 6117, Fax: +91-40-2789 2633

**Campus:** Ibrahimpatnam, R.R. District, Hyderabad-501506, Telangana, India. Ph: (0/95) 8414-20 21 20/21

## Solid Works Syllabus

| S.NO | TOPIC COVERED                                                                                                                                                                                                                                                  | DURATION (Hours) |
|------|----------------------------------------------------------------------------------------------------------------------------------------------------------------------------------------------------------------------------------------------------------------|------------------|
| 1    | Introduction to CAD, CAE, PDM, Features of Solid Works, Various products available in Solid Works for Product Design, Simulation, Communication.                                                                                                               | 3                |
| 2    | Sketch Entities – Inference line, Centerline line, Line, Circle, Arc, Ellipse, Rectangle, Slots, Polygon, Parabola, Ellipse, Partial Ellipse, Spline, Spline tools, Spline on surface, Equation driven curve, Points, Text, Construction geometry, Snap, grid. | 3                |
| 3    | Sketch Tools - Fillet, <u>Chamfer</u> , Offset, Convert entities, Intersection, curve, Face curve, Trim, Extend, Split, Jog Line, Construction                                                                                                                 | 3                |
| 4    | Geometry, Mirror, Dynamic Mirror, Move, Copy, Rotate, Scale, Stretch, Sketch pattern , Polygon, Make path, Close Sketch To Model, Sketch picture, Check Sketch for Feature, Area hatch/Fill                                                                    | 3                |
| 5    | Part Modeling Tools- Creating reference planes, Creating Extrude features – Direction1, Direction2, From option, Thin feature, Applying draft, Selecting contours                                                                                              | 3                |
| 6    | Creating Revolve features – Selecting Axis, Thin features, Selecting, Contours.                                                                                                                                                                                | 3                |
| 7    | Creating Swept features-Selecting, Profile and Path, Orientation/twist type, Path Alignment, Guide Curves, Start/End, tangency, Thin feature.                                                                                                                  | 3                |
| 8    | Creating Loft features – Selecting Profiles, Guide curves, Start/End, Constraints, Centerline parameters, Sketch tools, Close loft. Selecting geometries – Selection Manager, Multiple Body concepts                                                           | 3                |
| 9    | Creating curves - Split curve, Project curve, Composite curve, Curve through points, Helix and Spiral.                                                                                                                                                         | 3                |



Accredited by  
National Board of Accreditation  
(CSE, ECE, ME)



Approved by  
AICTE - New Delhi



Affiliated to  
JNTU - Hyderabad

Hyderabad's First  
campus to become  
  
GOLD PARTNER



# GURU NANAK INSTITUTE OF TECHNOLOGY

**City Office:** B2, 2<sup>nd</sup> Flr, Above Bata, Vikrampuri Colony, Karkhana Road, Secunderabad-50009, Telangana, India.  
Ph: +91-40-6632 3294, 6517 6117, Fax: +91-40-2789 2633

www.gnithyd.ac.in

**Campus:** Ibrahimpatnam, R.R. District, Hyderabad-501506, Telangana, India. Ph: (0/95) 8414-20 21 20/21

|    |                                                                                                                                               |   |
|----|-----------------------------------------------------------------------------------------------------------------------------------------------|---|
| 10 | Creating Pattern - Linear pattern, Circular pattern, Sketch driven, pattern, Curve driven pattern, Table driven pattern, Fill pattern, mirror |   |
| 11 | Inserting Fastening features- Mounting boss, snap hook, Snap hook, groove, Vent                                                               | 3 |
| 12 | Introduction to Assembly Modeling & Approaches – Top down and Bottom up approach                                                              | 3 |
| 13 | Applying Standard Mates- Coincident, Parallel, Perpendicular, Tangent, Concentric, Lock, Distance, Angle.                                     | 3 |
| 14 | Applying Advanced Mates – Symmetric, Width, Path Mate, Linear/Linear Coupler, Limit Mate.                                                     | 3 |
| 15 | Applying Mechanical Mates – Cam, Hinge, Gear, Rack Pinion, Screw, Universal Joint.                                                            | 3 |
| 16 | Applying Smart mates, Applying Mate reference, Surface Modeling tools                                                                         | 3 |
| 17 | Creating Extrude, Revolve, Swept, loft, Boundary surface.                                                                                     | 3 |
| 18 | Inserting Planar Surface, Offset Surface, Radiate Surface.                                                                                    | 3 |
| 19 | Extending a surface, Surface fill, Ruled Surface, Trimming Surface,                                                                           | 3 |
| 20 | Mid surface, Replace Face, Delete face, Untrim surface, Knit surface, Thickening a Surface, Move Face.                                        | 3 |

*[Signature]*  
HOD-ME



Accredited by  
National Board of Accreditation  
(CSE, ECE, ME)



Approved by  
AICTE - New Delhi



Affiliated to  
JNTU - Hyderabad

Hyderabad's First  
campus to become  
 Microsoft  
GOLD PARTNER



## GURU NANAK INSTITUTE OF TECHNOLOGY

City Office: B2, 2<sup>nd</sup> Flr, Above Bata, Vikramপুরi Colony, Karkhana Road, Secunderabad-50009, Telangana, India.  
Ph: +91-40-6632 3294, 6517 6117, Fax: +91-40-2789 2633

www.gnithyd.ac.in Campus: Ibrahimpatnam, R.R. District, Hyderabad-501506, Telangana, India. Ph: (0/95) 8414-20 21 20/21

### Solid Works Technical Training student list

| Sl.No. | Roll No.   | Name of the student      | Year |
|--------|------------|--------------------------|------|
| 1      | 15831A0342 | EJAZUR RAHMAN            | IV   |
| 2      | 15831A0343 | ERRAGONDA DEVENDER NATH  | IV   |
| 3      | 15831A0345 | GAJULA SAI KIRAN         | IV   |
| 4      | 15831A0346 | GAMPALA AKHIL            | IV   |
| 5      | 15831A0347 | GANJI BHARATH            | IV   |
| 6      | 15831A0348 | GAUTAM RAJ               | IV   |
| 7      | 15831A0349 | G RAMAKRISHNA            | IV   |
| 8      | 15831A0350 | GORGE BHANU PRASAD       | IV   |
| 9      | 15831A0351 | GORUTAPALLY SHIVAKRISHNA | IV   |
| 10     | 15831A0352 | G HARSHAVARDHAN          | IV   |
| 11     | 15831A0353 | GUGULOTHU VINAYKUMAR     | IV   |
| 12     | 15831A0355 | HEMANT KUMAR             | IV   |
| 13     | 15831A0357 | JATOTHU SUCHARITHA       | IV   |
| 14     | 15831A0358 | JENNU THARUN             | IV   |
| 15     | 16835A0302 | A DEEPCHANDER            | IV   |
| 16     | 16835A0303 | B RUCHITA                | IV   |
| 17     | 16835A0304 | B SRIKANTH               | IV   |
| 18     | 16835A0305 | B RAJU                   | IV   |
| 19     | 16835A0306 | C SANDEEP                | IV   |
| 20     | 16835A0307 | D ANIL                   | IV   |
| 21     | 16835A0308 | D INDU                   | IV   |
| 22     | 16835A0309 | J GOURI SHANKAR          | IV   |
| 23     | 16835A0310 | T OMSAI PRAKASH          | IV   |
| 24     | 16835A0311 | V SOUMYA                 | IV   |
| 25     | 15831A0363 | KELAVATH VISHNU          | IV   |
| 26     | 15831A0364 | K MALLIKARJUN REDDY      | IV   |
| 27     | 15831A0365 | KILARU LOKESH            | IV   |
| 28     | 15831A0366 | KODIDA LAVANYA           | IV   |
| 29     | 15831A0367 | KOKKONDA NIKHIL          | IV   |
| 30     | 15831A0368 | KOTA MANOHAR             | IV   |

  
HOD-ME

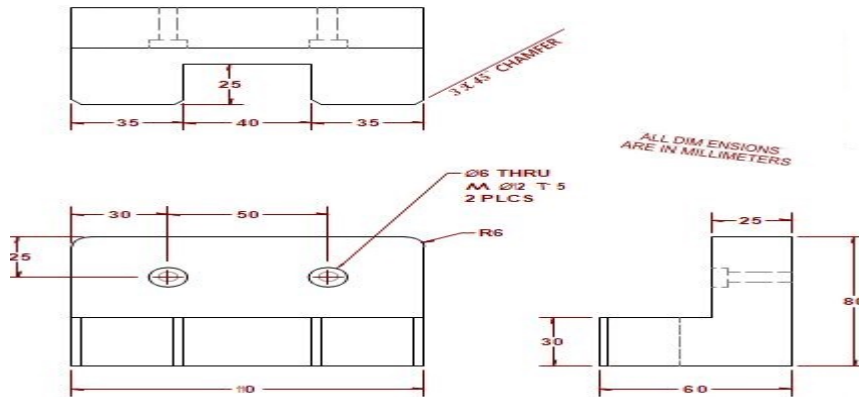


## Technical Training Exam on Solidworks Software (A.Y-2018-19)

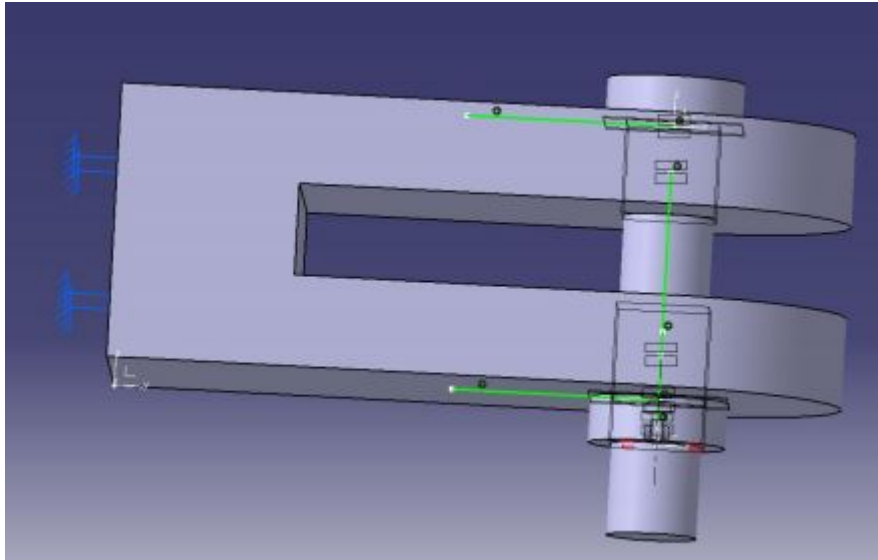
Answer All the Questions

2x10=20 Marks

1. Draw the given 2D model into 3D model by using Solidworks



2. Draft the given Solid by using Solidworks



*[Signature]*  
HOD-ME



Accredited by  
National Board of Accreditation  
(CSE, ECE, ME)



Approved by  
AICTE - New Delhi



Affiliated to  
JNTU - Hyderabad

Hyderabad's First  
campus to become  
  
GOLD PARTNER



# GURU NANAK INSTITUTE OF TECHNOLOGY

City Office: B2, 2<sup>nd</sup> Flr, Above Bata, Vikramপুরi Colony, Karkhana Road, Secunderabad-50009, Telangana, India.  
Ph: +91-40-6632 3294, 6517 6117, Fax: +91-40-2789 2633

www.gnithyd.ac.in Campus: Ibrahimpatnam, R.R. District, Hyderabad-501506, Telangana, India. Ph: (0/95) 8414-20 21 20/21

## Department of Mechanical Engineering

### Solid Works Marks List 2017-18

| Sl.No. | Roll No.   | Name of the student           | Marks | Pass/Fail |
|--------|------------|-------------------------------|-------|-----------|
| 1      | 14831A0306 | AKULA SHIVAPRASAD             | 15    |           |
| 2      | 14831A0307 | ANKURI SAIKUMAR               | 12    |           |
| 3      | 14831A0308 | ANURADHA KUMARI               | 14    |           |
| 4      | 14831A0309 | ATHYALA VAMSI KUMAR           | 15    |           |
| 5      | 14831A0310 | B GIRISH KUMAR                | 16    |           |
| 6      | 14831A0313 | BANOTHU SAI TRISHUL           | 14    |           |
| 7      | 14831A0315 | BANURI HARSHITH               | 18    |           |
| 8      | 14831A0316 | BHARGAV PRASHANT R JAKKULA    | 15    |           |
| 9      | 14831A0317 | BHUKYA SATISH KUMAR           | 16    |           |
| 10     | 14831A0318 | BHUKYA VENKATESH NAIK         | 15    |           |
| 11     | 14831A0319 | BODDUNA SAI KRISHNA           | 7     | FAIL      |
| 12     | 14831A0320 | CHEVURI ANUSHA                | 14    |           |
| 13     | 14831A0321 | BOLLAMPALLY VAMSHI KRISHNA    | 16    |           |
| 14     | 14831A0322 | BOLLINENI RAMPRASAD           | 18    |           |
| 15     | 14831A0323 | BUDDHA MANIDEEP               | 18    |           |
| 16     | 14831A0324 | BURRALLU SHIVA KUMAR          | 6     | FAIL      |
| 17     | 14831A0325 | BURUGU PRASHANTH              | 16    |           |
| 18     | 14831A0326 | C SHASHANK ADITYA KIRAN REDDY | 16    |           |
| 19     | 14831A0327 | CEELAM GOPINATH               | 7     | FAIL      |
| 20     | 14831A0328 | CHAKINALA SAIKIRAN            | 14    |           |
| 21     | 14831A0329 | CHALLA LOKESH KUMAR           | 15    |           |
| 22     | 14831A0330 | CHIMMANA SAI RAM              | 15    |           |
| 23     | 14831A0331 | CHINDAM SAI CHARAN            | 15    |           |
| 24     | 14831A0332 | CHINTHAKAYALA ABHILASH        | 15    |           |
| 25     | 14831A0333 | CHINTHAKINDI PRAVALIKA        | 7     | FAIL      |
| 26     | 14831A0334 | CHOKKARAJU DWARAKANATH RAJU   | 15    |           |
| 27     | 14831A0335 | D CHAITHANYA KUMAR            | 15    |           |
| 28     | 14831A0336 | DANDAMPALLY PARUSHURAM        | 14    |           |
| 29     | 14831A0337 | DANDANAYAKULA VAMSHI KRISHNA  | 15    |           |
| 30     | 14831A0338 | DEVARAPALLY PRASHANTH REDDY   | 15    |           |
| 31     | 14831A0339 | DEVUNURI SAI TEJA             | 14    |           |
| 32     | 14831A0340 | DODDA PREETHI                 | 14    |           |
| 33     | 14831A0341 | EDAVATHARA GEORGE PRINCE      | 14    |           |
| 34     | 14831A0342 | ESLAVATH SAI KISHORE          | 15    |           |
| 35     | 14831A0346 | GANESH ARAVINDH               | 16    |           |

  
HOD-ME





www.gnithyd.ac.in

# GURU NANAK INSTITUTE OF TECHNOLOGY

**City Office:** B2, 2<sup>nd</sup> Flr, Above Bata, Vikrampuri Colony, Karkhana Road, Secunderabad-50009, Telangana, India.  
Ph: +91-40-6632 3294, 6517 6117, Fax: +91-40-2789 2633

**Campus:** Ibrahimpatnam, R.R. District, Hyderabad-501506, Telangana, India. Ph: (0/95) 8414-20 21 20/21

## Department of Mechanical Engineering

### SOLID WORKS COURSE

#### Summery

- Using integrated simulation tools to conduct virtual prototyping is a better, more lucrative way to do business.
- Because you are conducting simulated tests on the computer and addressing design issues in software instead of in hard materials, you can eliminate prototype failures and associated costs.
- You can then invoice for the simulation time instead of passing through production costs. With integrated simulation, you will improve cash flow, realize a fast return on your investment, and expand the number and types of projects you can undertake, without increasing resources.
- SolidWorks Simulation offers the highest degree of CAD integration of any solution in the industry.
- The application runs completely inside the SolidWorks CAD software system, and includes advances in meshing and solving technology. With more than 1.4 million SolidWorks software CAD licenses in production, chances are good that your customers—and other companies that need simulation services— use SolidWorks software.
- This means that you, and your clients, can avoid the headaches and delays associated with incompatible data, file conversions, and geometry translations.

  
HOD-ME



Accredited by  
National Board of Accreditation  
(CSE, ECE, ME)



Approved by  
AICTE - New Delhi



Affiliated to  
JNTU - Hyderabad

Hyderabad's First  
campus to become  
  
Microsoft  
GOLD PARTNER





# CANTER CADD

B.N.Reddy Nagar, Hyderabad- 500070

## *Certificate Of Course Completion*

This certificate is presented to AKULA SHIVA PRASAD Of GNIT, who has successfully completed technical training course on "SOLID WORKS" held from 18.10.2017 to 28.10.2017 and found the student performance to be excellent.



Mr. G.V.Ravi Teja  
CEO of Canter CADD