



www.gnithyd.ac.in

# GURU NANAK INSTITUTE OF TECHNOLOGY

**City Office:** B2, 2<sup>nd</sup> Flr, Above Bata, Vikrampuri Colony, Karkhana Road, Secunderabad-50009, Telangana, India.  
Ph: +91-40-6632 3294, 6517 6117, Fax: +91-40-2789 2633

**Campus:** Ibrahimpatnam, R.R. District, Hyderabad-501506, Telangana, India. Ph: (0/95) 8414-20 21 20/21

Date: 27.08.2018

## CIRCULAR

Technical Training for III B. Tech students are starting from 10<sup>th</sup> Sept, 2018 onwards. All HODs and Placements coordinators have to manage the trainings and ensure 95% attendance all through the sessions.

All Mentors need to send the compiled feedback report to Dr.B.Vijaya Kumar, HOD at [hodme.gnit@gniindia.org](mailto:hodme.gnit@gniindia.org) daily. Mentors are advised to take care of PNR (Students not participating in training).

**Agenda:**

**Introduction to PRO-E.**

  
HOD-ME



Accredited by  
National Board of Accreditation  
(CSE, ECE, ME)



Approved by  
AICTE - New Delhi



Affiliated to  
JNTU - Hyderabad

Hyderabad's First  
campus to become  
  
Microsoft  
GOLD PARTNER



www.gnithyd.ac.in

# GURU NANAK INSTITUTE OF TECHNOLOGY

**City Office:** B2, 2<sup>nd</sup> Flr, Above Bata, Vikrampuri Colony, Karkhana Road, Secunderabad-50009, Telangana, India.  
Ph: +91-40-6632 3294, 6517 6117, Fax: +91-40-2789 2633

**Campus:** Ibrahimpatnam, R.R. District, Hyderabad-501506, Telangana, India. Ph: (0/95) 8414-20 21 20/21

## Department of Mechanical Engineering

### PRO-E COURSE Summery

- In this course, you will learn how to utilize the core functionality enhancements in Pro-E Parametric.
- First, you will become familiar with using and customizing the new ribbon interface in Pro-E Parametric.
- The new measure and sectioning interfaces will also be examined. Next, you will become familiar with the Sketcher workflow and reference enhancements.
- Part modeling enhancements to features such as Extrude, Corner Chamfer, Sweeps, Blends, and Datum Curves will then be examined.
- You will also learn about new and enhanced Assembly capabilities, such as selecting multiple components, the new relationship constraints, and enhancements for dragging components.
- Then, you will examine the new Table and Balloon functionality for 2-D drawings, and review various detailing enhancements.
- At the end of each module, you will complete a set of review questions to reinforce critical topics from that module. At the end of the course, you will complete a course assessment in Pro/FICIENCY intended to evaluate your understanding of the course as a whole.

  
HOD-ME



Accredited by  
National Board of Accreditation  
(CSE, ECE, ME)



Approved by  
AICTE - New Delhi



Affiliated to  
JNTU - Hyderabad

Hyderabad's First  
campus to become  
  
Microsoft  
GOLD PARTNER




## GURU NANAK INSTITUTE OF TECHNOLOGY

City Office: B2, 2<sup>nd</sup> Flr, Above Bata, Vikrampuri Colony, Karkhana Road, Secunderabad-50009, Telangana, India.  
Ph: +91-40-6632 3294, 6517 6117, Fax: +91-40-2789 2633

www.gnithyd.ac.in Campus: Ibrahimpatnam, R.R. District, Hyderabad-501506, Telangana, India. Ph: (0/95) 8414-20 21 20/21

### PRO-E Technical Training student list

Sl.No.	Roll No.	Name of the student	Year
1	17831A0379	R PRANAY KUMAR	II
2	17831A0380	R RAHUL	II
3	17831A0381	RALLABANDI SAIWARDHAN	II
4	17831A0383	REDDY VIJAY RUTHER	II
5	17831A0384	RISHIKESH RAO NAMINENI	II
6	17831A0385	SHAIK ASIF SOHAIL	II
7	17831A0386	SUDESH KAILASH	II
8	17831A0387	SUREPALLY GOUTHAM KUMAR	II
9	17831A0388	TERVATI DEEKSHITH	II
10	17831A0389	UPPALA BALASAIMANIKANTA	II
11	17831A0390	V AMAN ARYAN	II
12	17831A0391	V R VISHAL	II
13	17831A0392	V RAJESHWAR REDDY	II
14	17831A0393	VASANTHA MURALI KRISHNA	II
15	17831A0395	VERAPPAGARI RAMANA	II
16	17831A0396	VOTTIPOGU MURALI	II
17	17831A0397	YASH TOSHNIWAL	II
18	17831A0398	YERRA GOURI NAGA VENKATA SAI ANJANA	II
19	17831A0399	RAMAVATH VIJAY KUMAR	II
20	18835A0323	MORIGADI VAMSHINATH	II
21	18835A0324	NAMPALLY SAI KIRAN	II
22	18835A0325	NARSAGOUNI RAHUL GOUD	II
23	18835A0328	PENDAM SRIKANTH	II
24	18835A0330	POTRU LAXMI PRASANNA	II
25	18835A0331	SAMALA KALYAN	II
26	18835A0333	SHEELAM SAIKIRAN	II
27	18835A0336	THARI NIKHIL	II
28	18835A0337	THOKALA ANVESH KUMAR	II
29	18835A0340	VATTIPELLI ANUSHA	II
30	17831A0345	KOTAGIRI VISHAL	II

  
HOD-ME

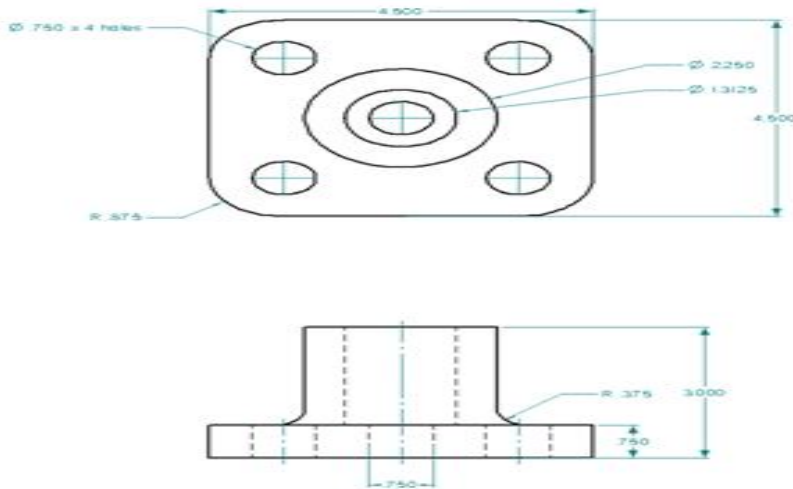


## Technical Training Exam on PRO-E Software (A.Y-2018-19)

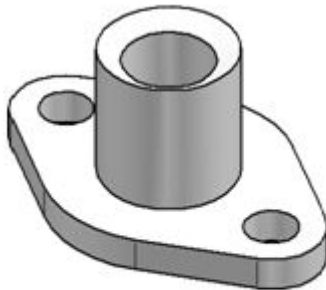
Answer All the Questions

2x10=20 Marks

1. Draw the given 2D model into 3D model by using Pro-E



2. Draft the given Solid by using Pro-E



*[Signature]*  
HOD-ME



# GURU NANAK INSTITUTE OF TECHNOLOGY

City Office: B2, 2<sup>nd</sup> Flr, Above Bata, Vikramপুরi Colony, Karkhana Road, Secunderabad-50009, Telangana, India.  
Ph: +91-40-6632 3294, 6517 6117, Fax: +91-40-2789 2633

www.gnithyd.ac.in Campus: Ibrahimpatnam, R.R. District, Hyderabad-501506, Telangana, India. Ph: (0/95) 8414-20 21 20/21

## Department of Mechanical Engineering

### Pro-e Technical Training Marks list 2016-17

Sl.No.	Roll No.	Name of the student	Marks	Pass/Fail
1	15831A03B2	PENUGONDA SRINATH	15	
2	15831A03B4	PITTALA PAVAN KUMAR	14	
3	15831A03B5	POGULA KRISHNA	14	
4	15831A03B7	PONAGANTI SRUTHI	15	
5	15831A03B8	PONUGOTI LAXMI PRASANNA	16	
6	15831A03C0	PUPPALA SACHIN	14	
7	16835A0312	B NITHISH KUMAR	18	
8	16835A0314	G NAVEEN KUMAR	15	
9	16835A0315	G SRUJAN YADAV	16	
10	16835A0316	K BALA KUMAR	15	
11	16835A0317	K SRIDHAR	7	FAIL
12	16835A0318	K MAHESH	14	
13	16835A0319	M DINESH KUMAR	16	
14	16835A0320	P MADHAV	18	
15	14831A0312	B KRANTI KUMAR	18	
16	14831A03E0	VASAM SAI KIRAN	6	FAIL
17	15831A03C2	RACHAKONDA SAITEJA	16	
18	15831A03C3	RAJULA NAVEEN	16	
19	15831A03C4	RAMASUDHARSHAN	7	FAIL
20	15831A03C5	RAPARTHI SHRUTHI	14	
21	15831A03C6	RAVI SHANKAR SIDAR	15	
22	15831A03C7	REGULAGADDA AKSHAY	15	
23	15831A03C8	ROHAN KUMAR	15	
24	15831A03D0	S VAIBHAV KRISHNA	15	
25	15831A03D2	SADINENI ABHAY CHAKRA	7	FAIL
26	15831A03D3	SAGAM KUNTA SUBHASH	15	
27	15831A03D4	SANGEM DEVENDRA KUMAR	15	
28	15831A03D5	SANGI BHARATH KUMAR	14	
29	15831A03D6	SAREDDY SOUMYA REDDY	15	
30	15831A03D7	SHAIK APSAR ALI	15	
31	15831A03D8	SHIV SHANKAR KANWAR	14	
32	15831A03E0	SOMA AKSHAY NAVANEETH REDDY	14	
33	15831A03E1	SUJEET KUMAR	14	
34	15831A03E2	SUNDHARAGIRI SAIMANISHEKAR	15	
35	15831A03E3	SUNKEY RUSHIKESH	16	
36	15831A03E4	T KIRAN	14	
37	15831A03E5	T SUSHANTH	18	
38	15831A03E6	TALLURI SANDEEP KUMAR	15	
39	15831A03E7	THATI SAIKRISHNA	16	
40	15831A03E8	THATIKONDA AKHIL REDDY	15	

*[Signature]*  
HOD-ME





www.gnithyd.ac.in

# GURU NANAK INSTITUTE OF TECHNOLOGY

**City Office:** B2, 2<sup>nd</sup> Flr, Above Bata, Vikrampuri Colony, Karkhana Road, Secunderabad-50009, Telangana, India.  
Ph: +91-40-6632 3294, 6517 6117, Fax: +91-40-2789 2633

**Campus:** Ibrahimpatnam, R.R. District, Hyderabad-501506, Telangana, India. Ph: (0/95) 8414-20 21 20/21

## Pro-E Syllabus

S.NO	TOPIC COVERED	DURATION (Hours)
1	<b>Introduction-</b> Based Nature, Bidirectional Associative Property Parametric Nature, System Requirements, Getting Started with Creo Parametric Important Terms and Definitions File Menu Options, Managing Files Menu Manager Model Tree, Understanding the Functions of the Mouse Buttons Ribbon, Toolbars Navigator.	3
2	<b>CREATING SKETCHES IN THE SKETCH MODE-I</b> The Sketch Mode, The Sketcher Environment, Working with a Sketch in the Sketch Mode, Drawing a Sketch Using tools available in the Sketch, Dimensioning the Sketch, Dimensioning the Basic Sketched Entities, Working with Constraints, Resolve Sketch Dialog Box, Deleting the Sketched Entities, Trimming the Sketched Entities, Mirroring the Sketched Entities, Inserting Standard/User-Defined Sketches, Drawing Display Options	3
3	<b>CREATING SKETCHES IN THE SKETCH MODE-II</b> Dimensioning the Sketch, Creating a Reference Coordinate System Working with Splines, Writing Text in the Sketcher Environment Rotating and Resizing Entities Importing 2D Drawings in the Sketch Mode	3
4	<b>CREATING BASE FEATURES-</b> Creating Base Features, Invoking the Part Mode, The Default Datum Planes, Creating a Protrusion, Understanding the Orientation of Datum Planes, Parent-Child Relationship, Nesting of Sketches.	3
5	<b>OPTIONS AIDING CONSTRUCTION OF PARTS-I</b> Options Aiding Construction of Parts, Creating Holes, Understanding Ribs Creating, Editing Features of a Model.	3
6	<b>OPTIONS AIDING CONSTRUCTION OF PARTS-II</b> Introduction, Creating Feature Patterns, Copying, Mirroring a Geometry, Creating a Section of a Solid	3
7	<b>ADVANCED MODELING TOOLS-I-</b> Other Protrusion Options, Sweep Features, Blend Features, Using Blend Vertex, Shell Feature, Datum Curves, Creating Draft Features	3
8	<b>ADVANCED MODELING TOOLS-II</b> Advanced Feature Creation Tools, Blend Between Surfaces	3
9	<b>ASSEMBLY MODELING</b> Assembly Modeling, Important Terms Related to the Assembly, Creating Top-down Assemblies, Mode Creating Bottom-up Assemblies, Assembly Assembling Components, Creating the Exploded State, The Bill of Materials, Global Interference, Pairs Clearance.	3
10	<b>GENERATING, EDITING, AND MODIFYING THE DRAWING VIEWS</b> The Drawing Mode, Generating Drawing Views Generating, Editing the Drawing Views, Modifying Other Parameters Editing	3
11	<b>DIMENSIONING THE DRAWING VIEWS</b> Dimensioning the Drawing Views, Adding Tolerances in the Drawing, Editing the Geometric Tolerances Adding Balloons to the Assembly Views Adding Reference Datums to the	3



Accredited by  
National Board of Accreditation  
(CSE, ECE, ME)



Approved by  
AICTE - New Delhi



Affiliated to  
JNTU - Hyderabad

Hyderabad's First  
campus to become  
 Microsoft  
GOLD PARTNER



# GURU NANAK INSTITUTE OF TECHNOLOGY

**City Office:** B2, 2<sup>nd</sup> Flr, Above Bata, Vikrampuri Colony, Karkhana Road, Secunderabad-50009, Telangana, India.  
Ph: +91-40-6632 3294, 6517 6117, Fax: +91-40-2789 2633

www.gnithyd.ac.in

**Campus:** Ibrahimpatnam, R.R. District, Hyderabad-501506, Telangana, India. Ph: (0/95) 8414-20 21 20/21

	Drawing Views, Modifying and Editing Dimensions	
12	<b>OTHER DRAWING OPTIONS</b> Sketching in the Drawing Mode Modifying the Sketched Entities User-Defined Drawing Formats, Retrieving the User-Defined Formats in the Drawings Adding and Removing Sheets in the Drawing Creating Tables in the Drawing Mode, Generating the BOM and Balloons in Drawings	3
13	<b>SURFACE MODELING</b> Surface Modeling, Creating Surfaces in Creo Parametric, Surface Freestyle modelling environment, Freestyle Dashboard	3
14	<b>WORKING WITH SHEET METAL COMPONENTS</b> - Introduction to Sheet metal, Invoking the Sheet metal Mode, Introduction to Sheet metal Walls, Creating the Bend Feature, Creating the Unbend Feature, Conversion to Sheet metal Part, Creating Cuts in the Sheet metal Components	3

  
HOD-ME



Accredited by  
National Board of Accreditation  
(CSE, ECE, ME)



Approved by  
AICTE - New Delhi



Affiliated to  
JNTU - Hyderabad

Hyderabad's First  
campus to become  
  
**GOLD PARTNER**





# CANTER CADD

B.N.Reddy Nagar, Hyderabad- 500070

## *Certificate Of Course Completion*

This certificate is presented to POGULA. KRISHNA Of GNIT, who has successfully completed technical training course on “PRO-E” held from 16.08.2016 to 26.08.2016 and found the student performance to be excellent.



Mr. G.V.Ravi Teja  
CEO of Canter CADD